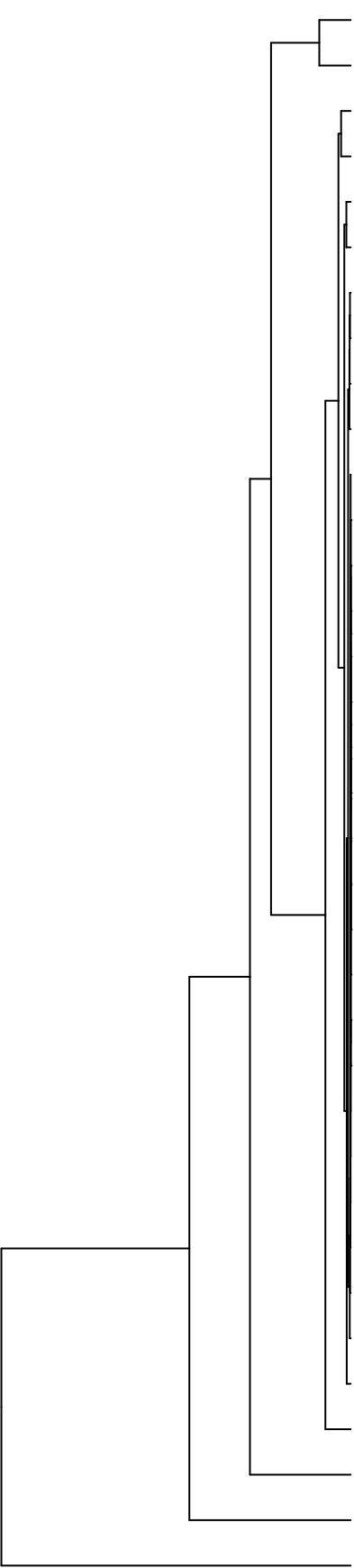


Group006  
 G Final -PMA  
 B Final -PMA



- Veillonellaceae
- Pasteurellaceae
- Actinomycetaceae
- Fusobacteriaceae
- Micrococcaceae
- Gemellaceae
- Leptotrichiaceae
- Prevotellaceae
- Campylobacteraceae
- Porphyromonadaceae
- Atopobiaceae
- Absconditabacteria\_(SR1)\_[F-1]
- Phyllobacteriaceae
- Flavobacteriaceae
- Rhizobiaceae
- Sphingomonadaceae
- Yersiniaceae
- Microbacteriaceae
- Weeksellaceae
- Hymenobacteraceae
- Saccharibacteria\_(TM7)\_[F-2]
- Mycobacteriaceae
- Propionibacteriaceae
- Moraxellaceae
- Burkholderiaceae
- Saccharibacteria\_(TM7)\_[F-1]
- Comamonadaceae
- Erysipelotrichaceae
- Lachnospiraceae
- Pseudomonadaceae
- Staphylococcaceae
- Carnobacteriaceae
- Neisseriaceae
- Streptococcaceae
- Enterobacteriaceae

- F28914.S441
- F28914.S564
- F28914.S401
- F28914.S402
- F28914.S404
- F28914.S443
- F28914.S562
- F28914.S446
- F28914.S447
- F28914.S448
- F28914.S561
- F28914.S444
- F28914.S442
- F28914.S081
- F28914.S567
- F28914.S082
- F28914.S083
- F28914.S246
- F28914.S245
- F28914.S242
- F28914.S247
- F28914.S288
- F28914.S286
- F28914.S282
- F28914.S125
- F28914.S127
- F28914.S126
- F28914.S088
- F28914.S084
- F28914.S124

Samples

Family